

Manchester Accommodation Guide

4* Hotels

Double Tree By Hilton—Manchester Piccadilly

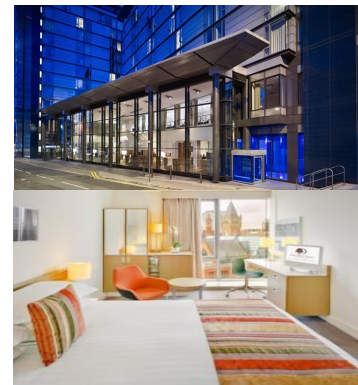
One Piccadilly Place, 1 Auburn St, Manchester M1 3DG - 0161 242 1000

The DoubleTree by Hilton Hotel Manchester - Piccadilly is located within a large commercial area of the city and is within easy walking distance to the Central Business District, Manchester Piccadilly train station.

This 4* hotel has a contemporary, but stylish finish with modern bedrooms and free WIFI.

[View on website!](#)

[View on Maps!](#)



Macdonald Hotel & Spa

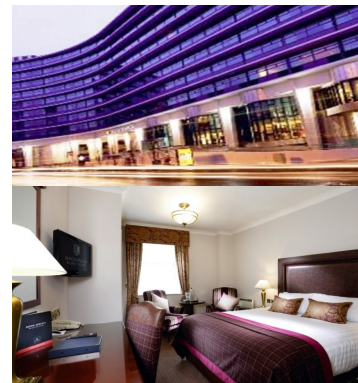
Berry Street, Manchester, M1 2AR—0344 879 9088

Recently awarded Best Luxury Hotel in Manchester from the Eat Drink and Awards 2015. Easily accessible by road, foot or rail with Manchester Piccadilly Train Station just 150 metres away.

This 4* hotel offers a stylish modern décor with complementary free WIFI— Perfect for business travel.

[View on website!](#)

[View on Maps!](#)



Holiday Inn— Manchester Centre

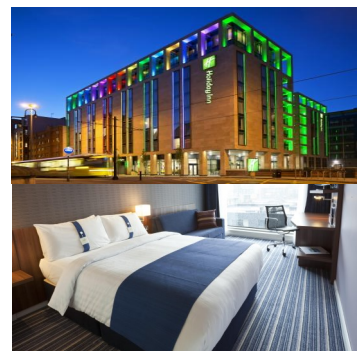
25 Aytoun St, Manchester M1 3AE - 0161 242 5444

A very stylish Holiday Inn Manchester; the newest addition to Manchester city centre, the obvious choice for business and leisure guests alike.

This stylish hotel, located in the heart of this vibrant city, opposite Piccadilly Station, offers bright, contemporary rooms come with limited complimentary Wi-Fi, TVs, custom-designed beds, and tea and coffee making equipment. Free Parking!

[View on website!](#)

[View on Maps!](#)



MANCHESTER
1824

The University of Manchester

Manchester Accommodation Guide

3* Hotels

Pendulum Hotel

Weston Building Sackville Street, Manchester, M1 3BB—0161 955 8000

Located perfectly for Manchester Conference Centre, this hotel is ideal place to kick-back and relax attending an all day conference.

All the rooms are comfortably furnished, with complimentary Wi-Fi throughout the hotel. Piccadilly Station and the Metrolink, just 300 metres away, and there is a car park adjacent to the hotel on Charles Street, chargeable locally.

[View on website!](#)

[View on Maps!](#)



Holiday Inn Oxford Road

2-4 Oxford Road, Manchester, M1 5QA—0871 423 4931

A minute's walk from Manchester Oxford Road train station, this straightforward, modern hotel is an 11-minute walk from Manchester Museum.

The bright, contemporary rooms come with limited complimentary Wi-Fi, TVs, custom-designed beds, and tea and coffee making equipment. Free Parking!

[View Website!](#)

[View on Maps!](#)



Remainder

Ibis Manchester Centre

Berry Street, Manchester, M1 2AR -0161 272 5000

This budget hotel in a modern building is a 3-minute walk from Manchester Conference Centre and a 5-minute walk from both Manchester Oxford Road rail station and the Palace Theatre.

Simple, cosy rooms come with desks, complimentary Wi-Fi and flat-screen TVs, plus tea and coffee making facilities.

[View Website!](#)

[View on Maps!](#)



Manchester Accommodation Guide

Other hotels continued -

Travelodge Upper Brook Street

227 Upper Brook Street, Manchester, M13 0HB—0871 984 6487

Across from the Manchester Eye Hospital, this modern budget hotel is 1.2 miles from the Palace Theatre and a 3.9-mile drive from the Imperial War Museum North.

The bright, contemporary rooms come with limited complimentary Wi-Fi, TVs, custom-designed beds, and tea and coffee making equipment. Free Parking!

[View Website!](#)

[View on Maps!](#)



Ibis Portland Street

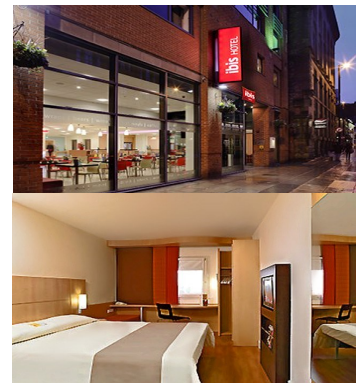
96 Portland St, Manchester M1 4GX -0161 619 9000

This modern hotel is a 5-minute walk from the Palace Theatre, 12 minutes' walk from Manchester Piccadilly train station and 15 minutes' walk from the Museum of Science and Industry.

Simple, cosy rooms come with desks, complimentary Wi-Fi and flat-screen TVs, plus tea and coffee making facilities.

[View Website!](#)

[View on Maps!](#)



MANCHESTER
1824

The University of Manchester